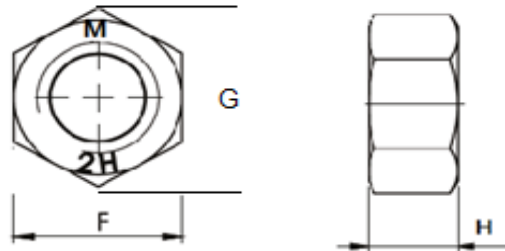


PORCA SEXT.PESADA 2H



Diâmetro Nominal	F		G		H	
	máx.	min.	máx.	min.	máx.	min.
1/4"	12,7	1,395	14,655	14,122	6,35	5,537
5/16"	14,274	13,868	16,51	15,798	7,975	7,112
3/8"	17,475	16,992	20,167	19,38	9,575	8,661
7/16"	19,05	18,491	21,996	21,082	11,201	10,236
1/2"	22,225	21,59	25,654	24,612	12,801	11,785
9/16"	23,825	23,088	27,508	26,339	14,427	13,36
5/8"	26,974	26,187	31,165	29,845	16,027	14,909
3/4"	31,75	30,784	36,652	35,102	19,253	18,034
7/8"	36,525	35,407	42,164	40,36	22,479	21,158
1"	41,275	40,005	47,65	45,618	25,704	24,282
1.1/8"	46,024	44,602	53,162	50,85	28,93	27,406
1.1/4"	50,8	49,225	58,648	56,108	31,775	30,149
1.3/8"	55,575	53,822	64,16	61,366	35,001	33,247
1.1/2"	60,325	58,42	69,646	66,598	38,227	36,398
1.5/8"	65,074	63,017	75,158	71,831	41,452	39,522
1.3/4"	69,85	67,614	80,645	77,089	44,678	42,646
1.7/8"	74,625	72,237	86,156	82,346	47,904	45,77
2"	79,375	76,835	91,643	87,604	51,13	48,895
2.1/4"	88,9	86,055	102,641	98,094	57,175	54,737
2.1/2"	98,425	95,25	113,639	108,585	63,627	60,985
2.3/4"	107,95	104,444	124,637	119,075	70,078	67,233
3"	117,475	113,665	135,636	129,59	76,53	73,482
3.1/4"	127	122,885	146,659	140,081	82,6	79,349
3.1/2"	136,525	132,08	157,657	150,571	89,052	85,598
3.3/4"	146,05	141,274	168,656	161,061	95,504	91,846
4"	155,575	150,495	179,654	171,677	101,955	98,094